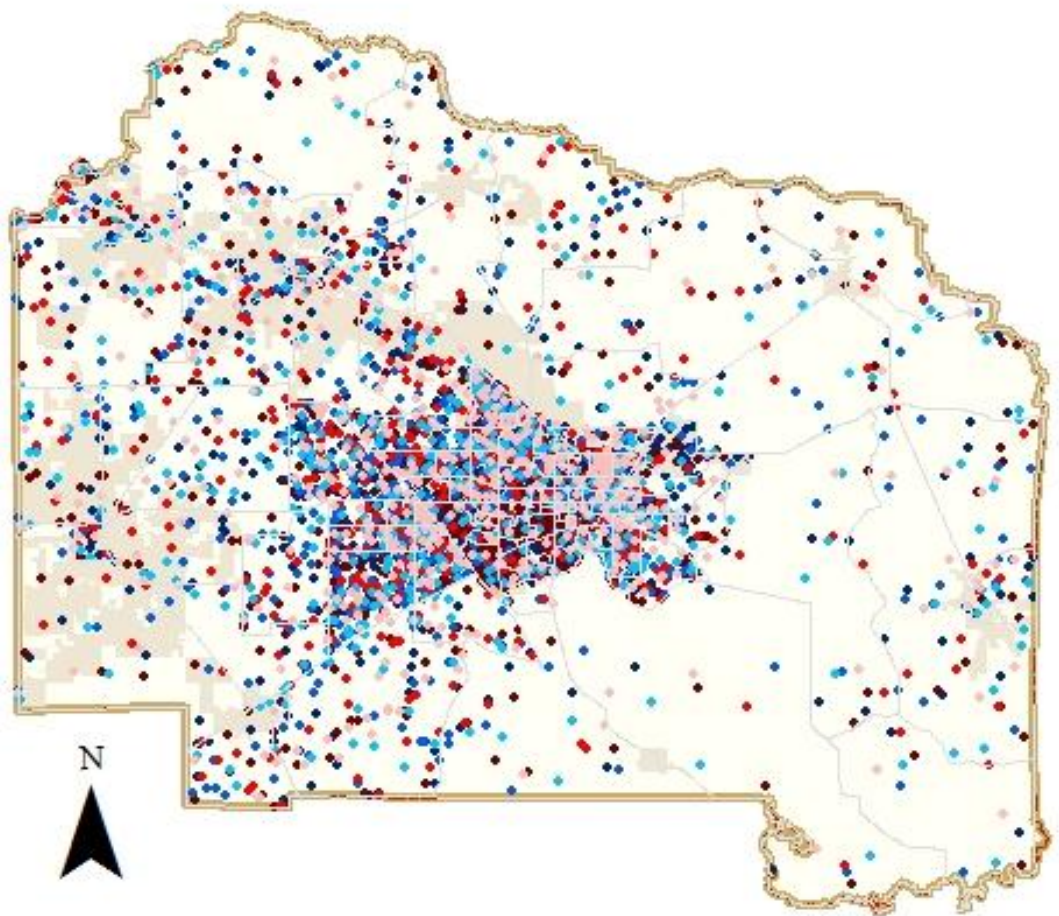


Child Friendliness in Alachua County

URP 4273

Katharina Perez Bermudez , Michael Bainum, Todd Eisenhauer, Shannon Moore

Child Density



Child Distribution

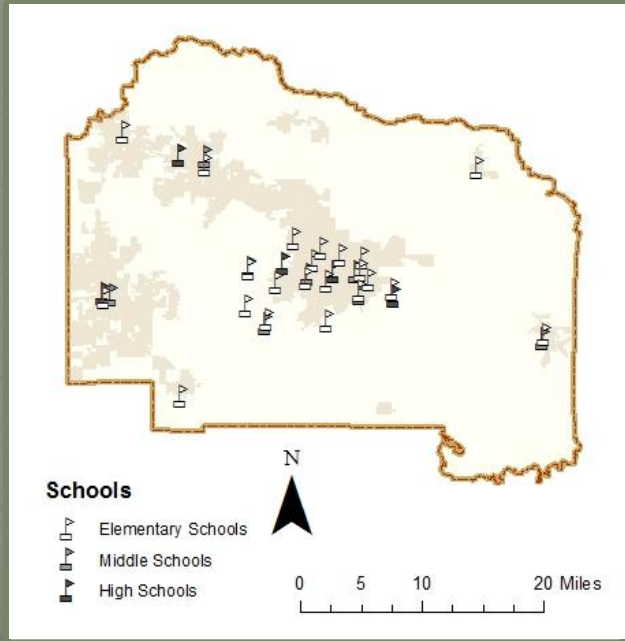
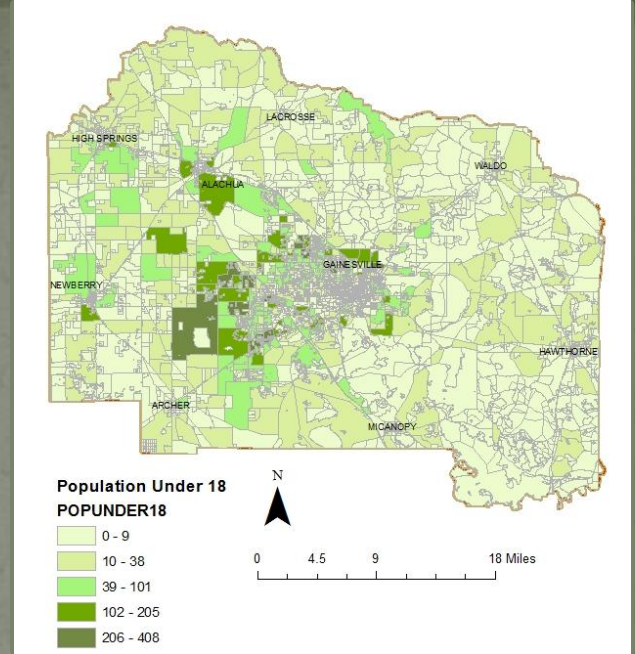
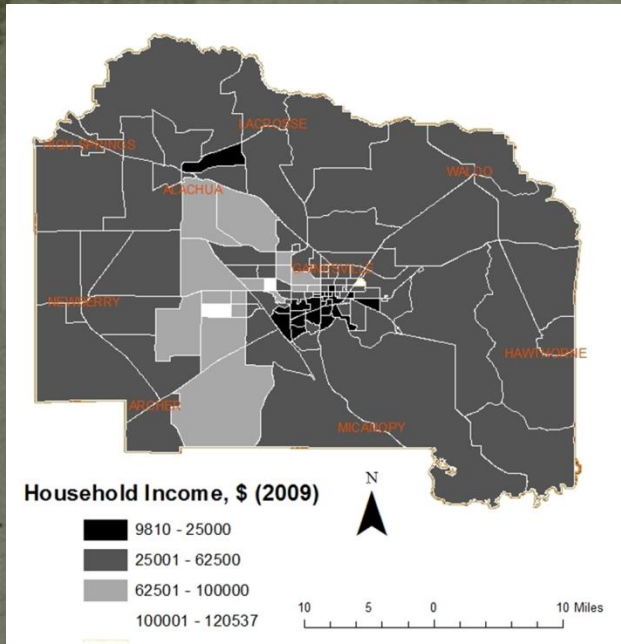
- 1 Dot = 10
FEMALES 5-9
- 1 Dot = 10
MALES 5-9
- 1 Dot = 10
FEMALES 10-14
- 1 Dot = 10
MALES 10-14
- 1 Dot = 10
FEMALES 15-19
- 1 Dot = 10
MALES 15-19

0 5 10 20 Miles

Goal

- The goal of this study is to determine the accessibility of recreational activities for children in Alachua County. This was done by analyzing three areas of interest (rural areas, middle schools, and low income areas). Transportation was also taken into account as it influences accessibility. Safety concerns and future land use were also assessed.

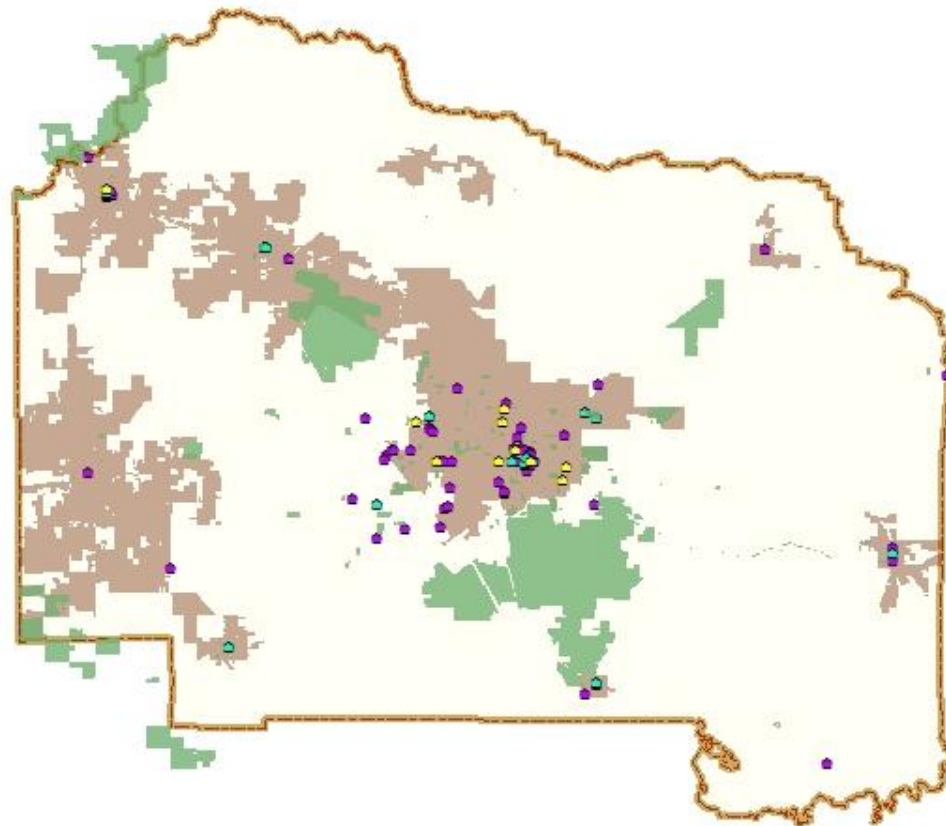




Focus Areas

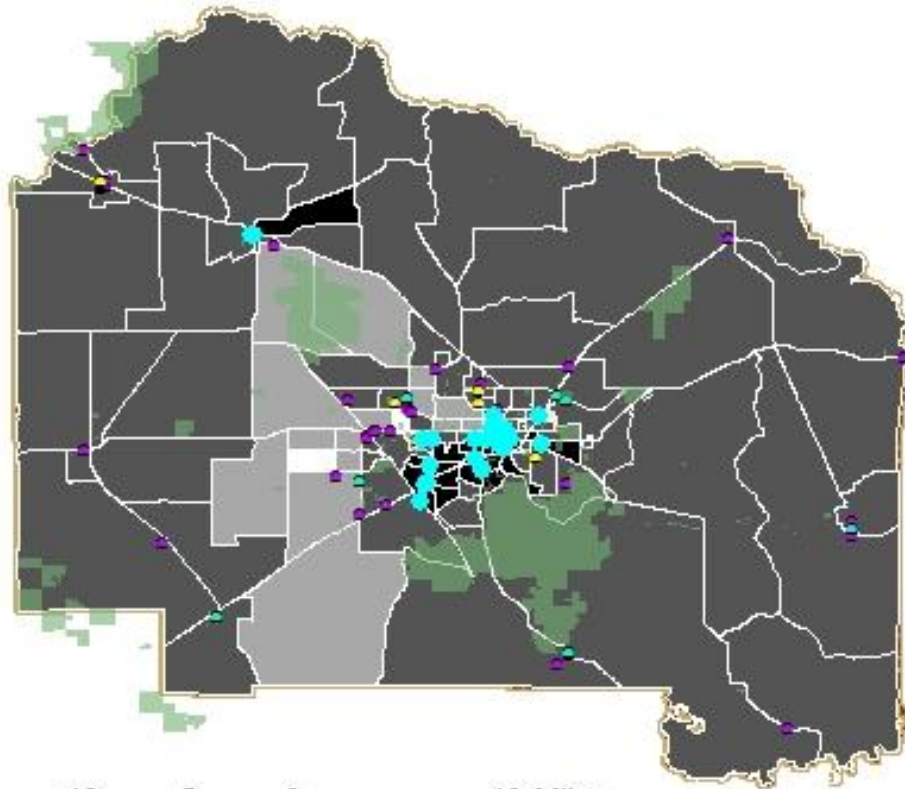
- Schools
- Low income Areas
- Rural Areas

Recreation Locations in Alachua County



-  Municipalities
-  Parks and Gardens
-  Youth Organizations
-  Libraries
-  Cultural Centers







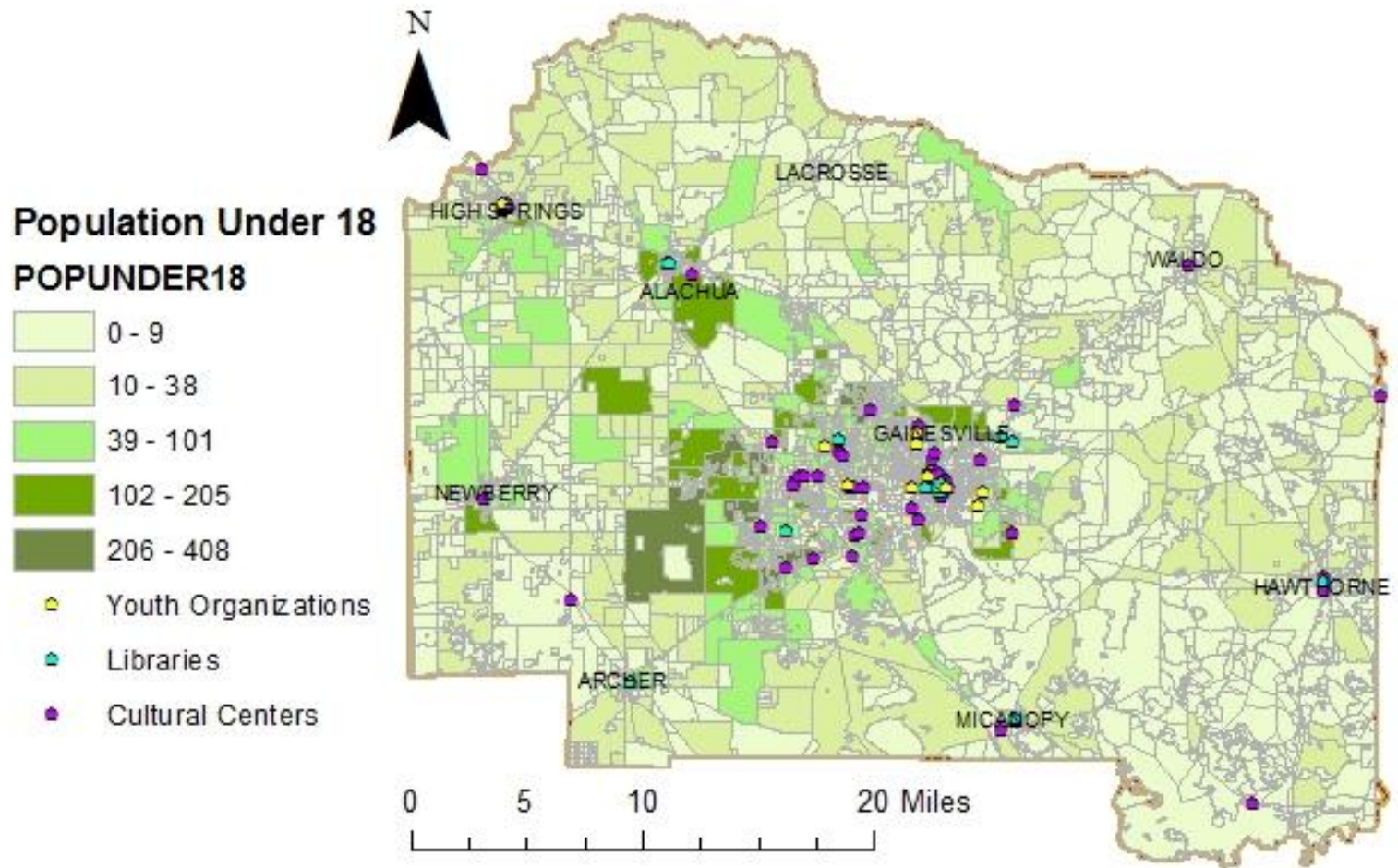
Household Income, \$ (2009)

-  9810 - 25000
-  25001 - 62500
-  62501 - 100000
-  100001 - 120537

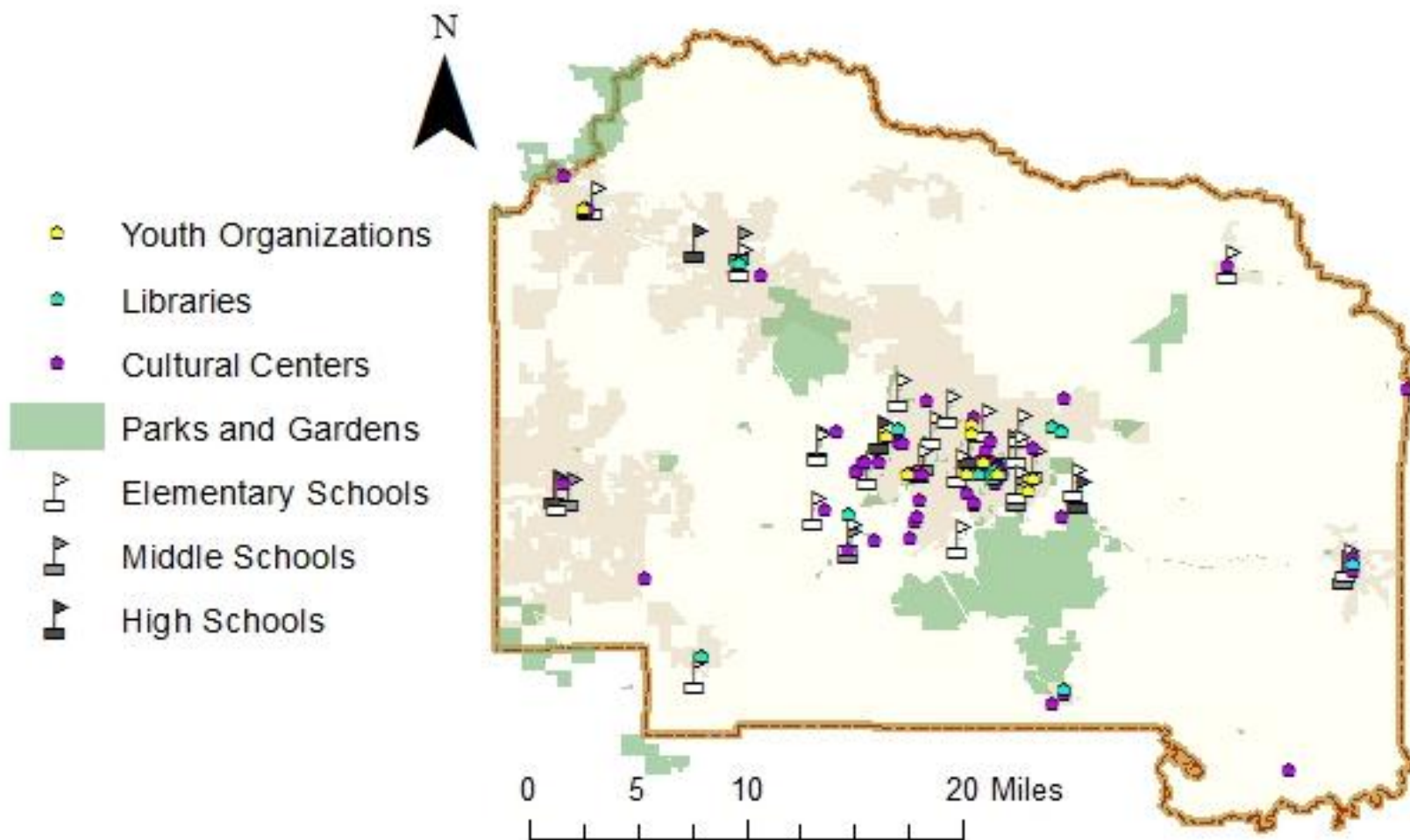
Recreational Activities

-  Parks and Gardens
-  Youth Organizations
-  Libraries
-  Cultural Centers

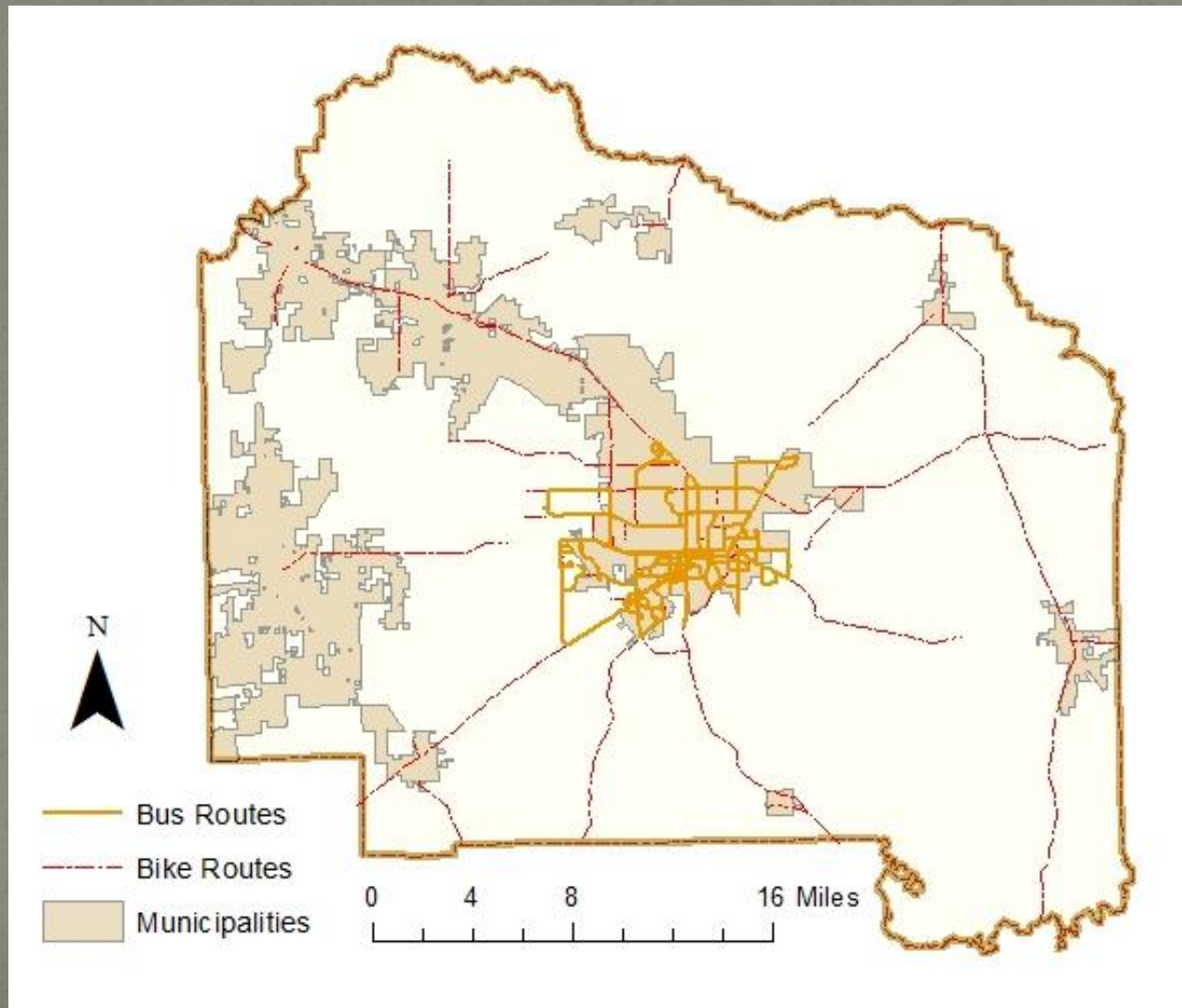
Rural Areas and Recreational Activities



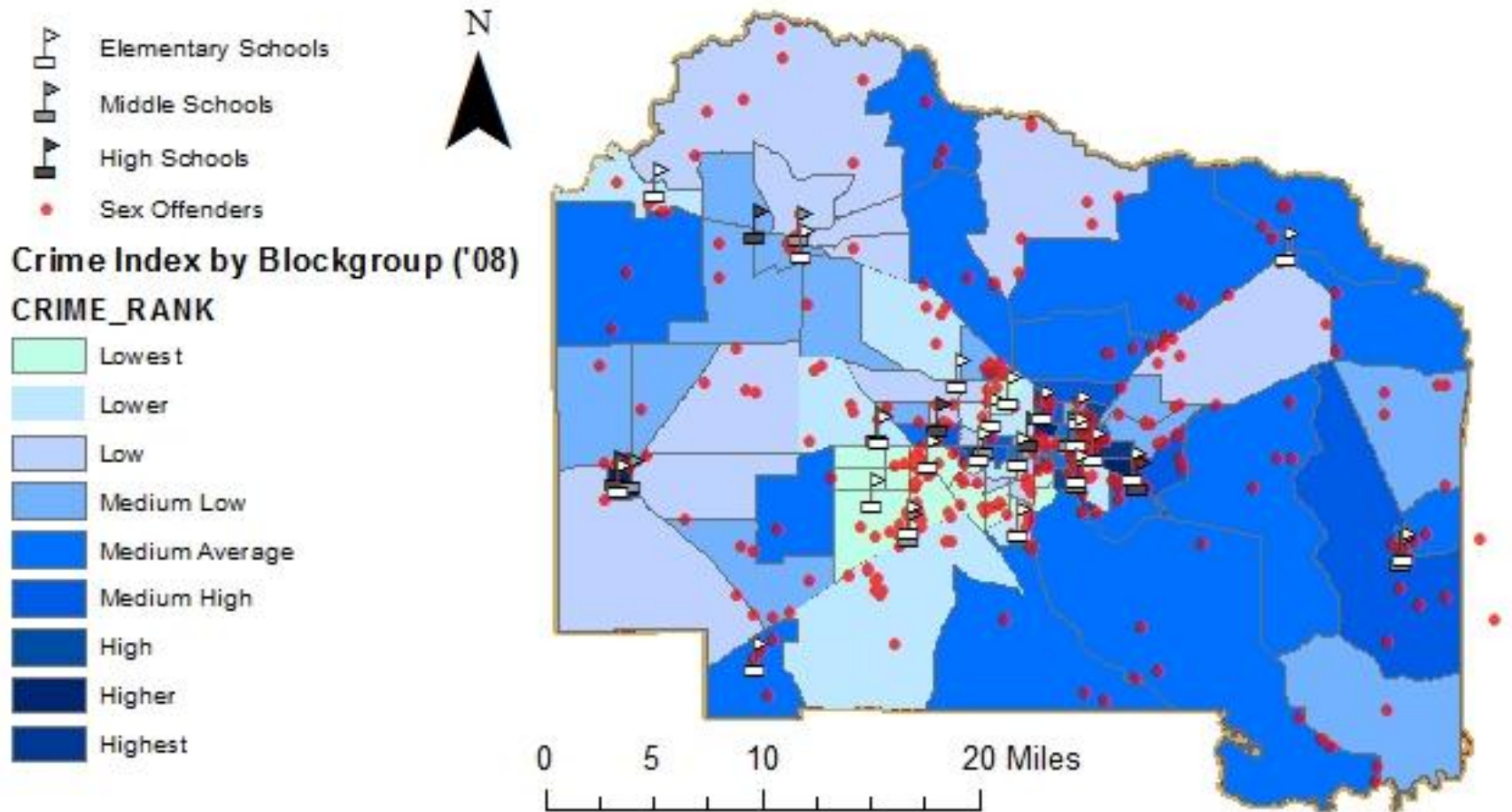
Schools and Recreational Activities



Transportation

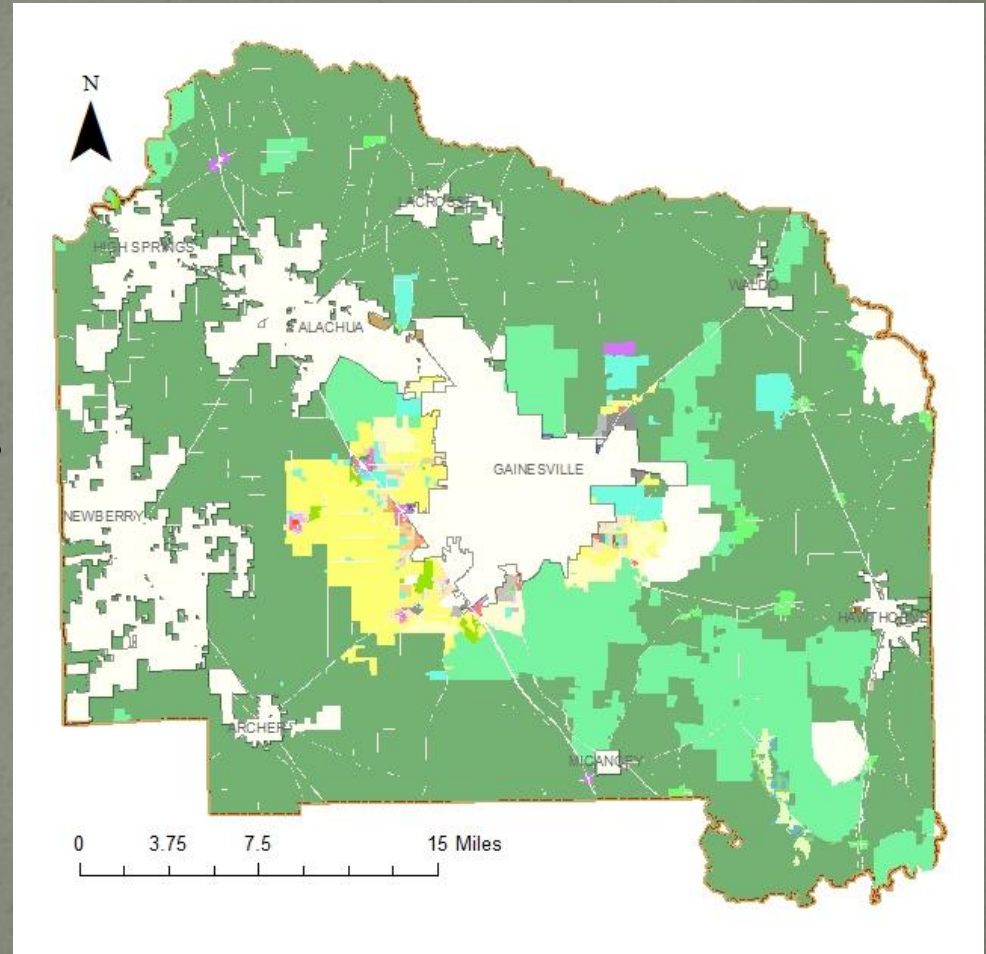


Safety Concerns



Future Land Use

Future Land Use



Methods

- Identify Focus Areas:
- Schools, Low Income
- Areas, Rural Areas
- Identify Key Recreation
- Locations: Libraries, Cultural
- Centers, Parks and Gardens, Youth Organizations
- Create maps for each of the focus areas with the recreation locations
- Select Recreation locations within .5 miles of focus area
- Determine accessibility for children
- Take into account Transportation, Safety Concerns, and Future Land Use



Summary

- Good and Bad
 - Gainesville Area has a large amount of accessibility, however everywhere else is very limited.
- Largest Problem
 - Westside of Alachua County
- What We've Seen
 - Westside Park
 - Paynes Prairie
- What Can be Done
 - Better transportation services
 - Creating Rec Centers closer to schools



Questions?



Westside Park



Paynes Prairie Preserve State Park

Hawthorne
Historical
Museum and
Cultural Center



High Springs Community Center